

Centering GBMSM in the National STI Response

**National HIV & Hepatitis TA Meeting
October 11, 2023**



NCS D

National Coalition
of STD Directors

THE BIG PICTURE: OUR VISION, GOAL, & MISSION



OUR VISION

A nation where all people can lead sexually healthy lives.

OUR GOAL

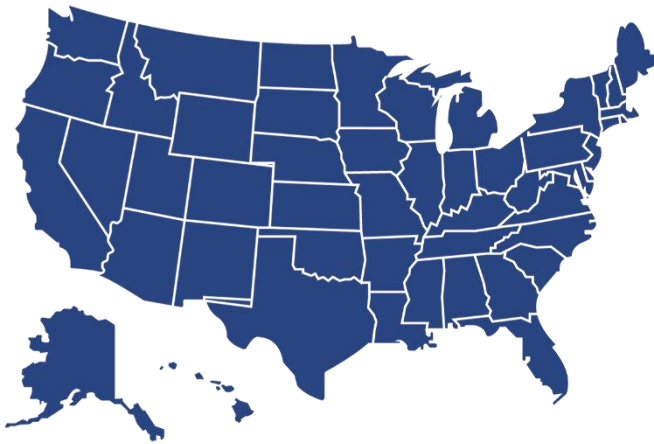
To strengthen the public health response to STIs.

OUR MISSION

To advance equitable, effective STI prevention programs and services in all communities across the country. *We do this as the voice of our members.*

OUR MEMBERS

**NCS D currently represents 5,600 STI professionals.
Among them:**



65 STD Directors



**1,400+ Clinic
Members**



**1,800+ DIS
Members**

HOW WE IMPROVE THE NATION'S HEALTH



Build the capacity of public health departments to prevent STIs and promote sexual health.



Create policymaker and public urgency around the STI epidemics.



Strengthen health equity within the STI and sexual health fields.



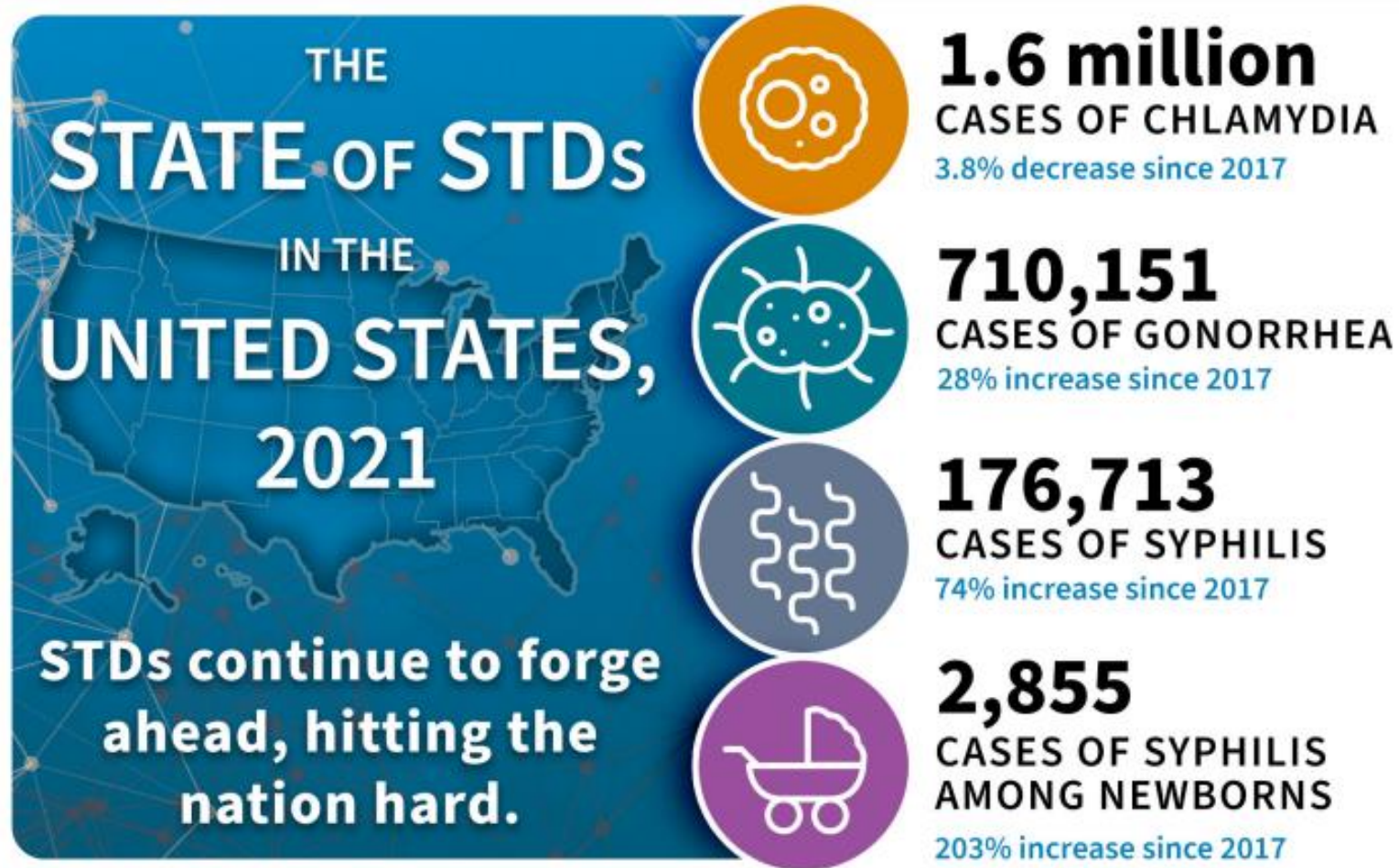
**DOXYCYCLINE
AS STI PEP
RESOURCE
CENTER**

A PUBLIC HEALTH RESPONSE TO STIs



Protect
WHAT MATTERS MOST.
GET THE
MPOX VAX.
SAFE. EFFECTIVE. MAKE YOUR PLAN.

THE SCOPE OF THE STI EPIDEMIC



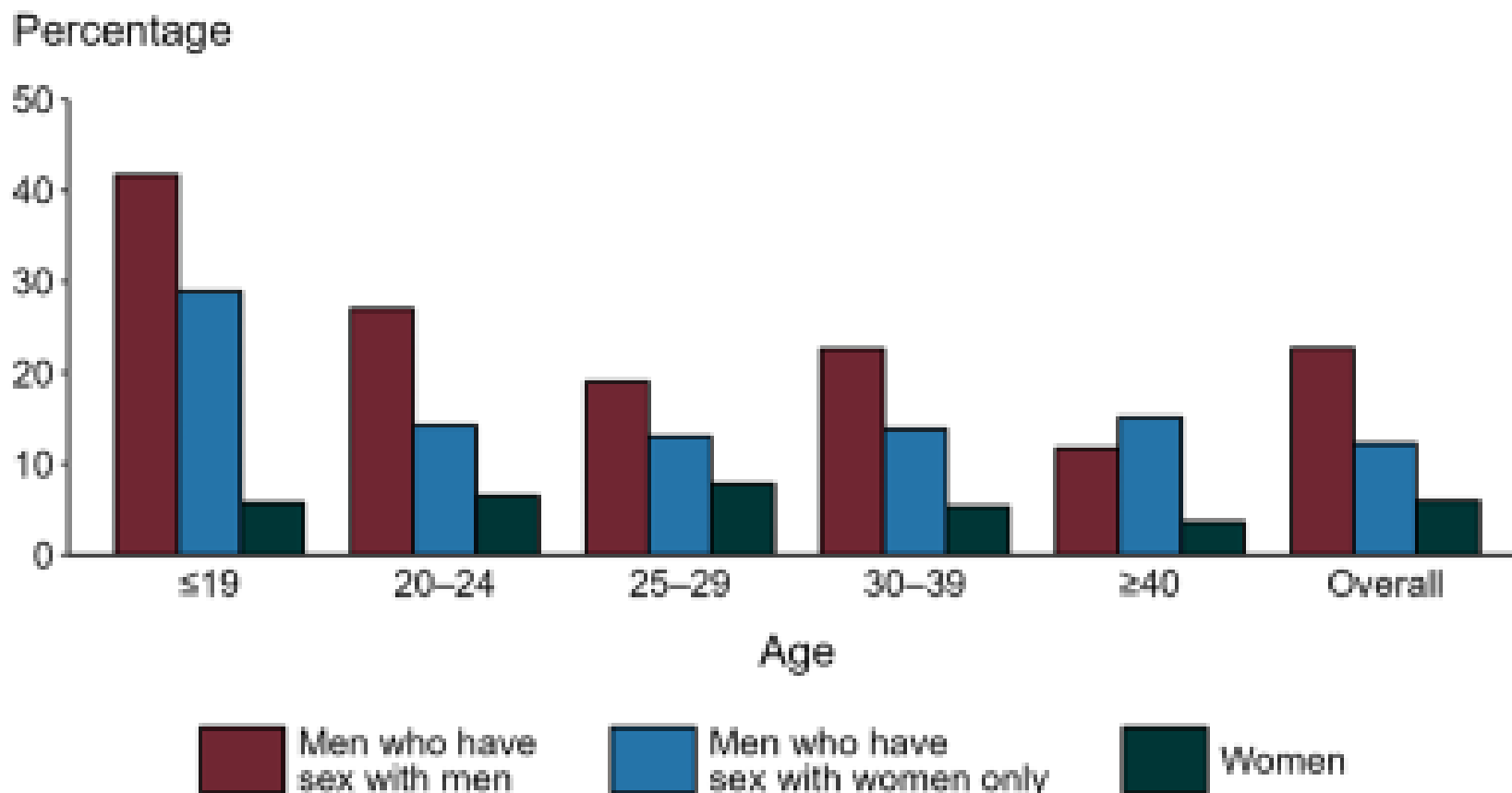
A DISPROPORTIONATE IMPACT



Sexually Transmitted Disease Surveillance 2021

“MSM are disproportionately impacted by STDs, including gonorrhea and primary and secondary syphilis; further, almost 40% of MSM reported with P&S syphilis had been diagnosed with HIV.” – CDC’s Sexually Transmitted Disease Surveillance, 2021

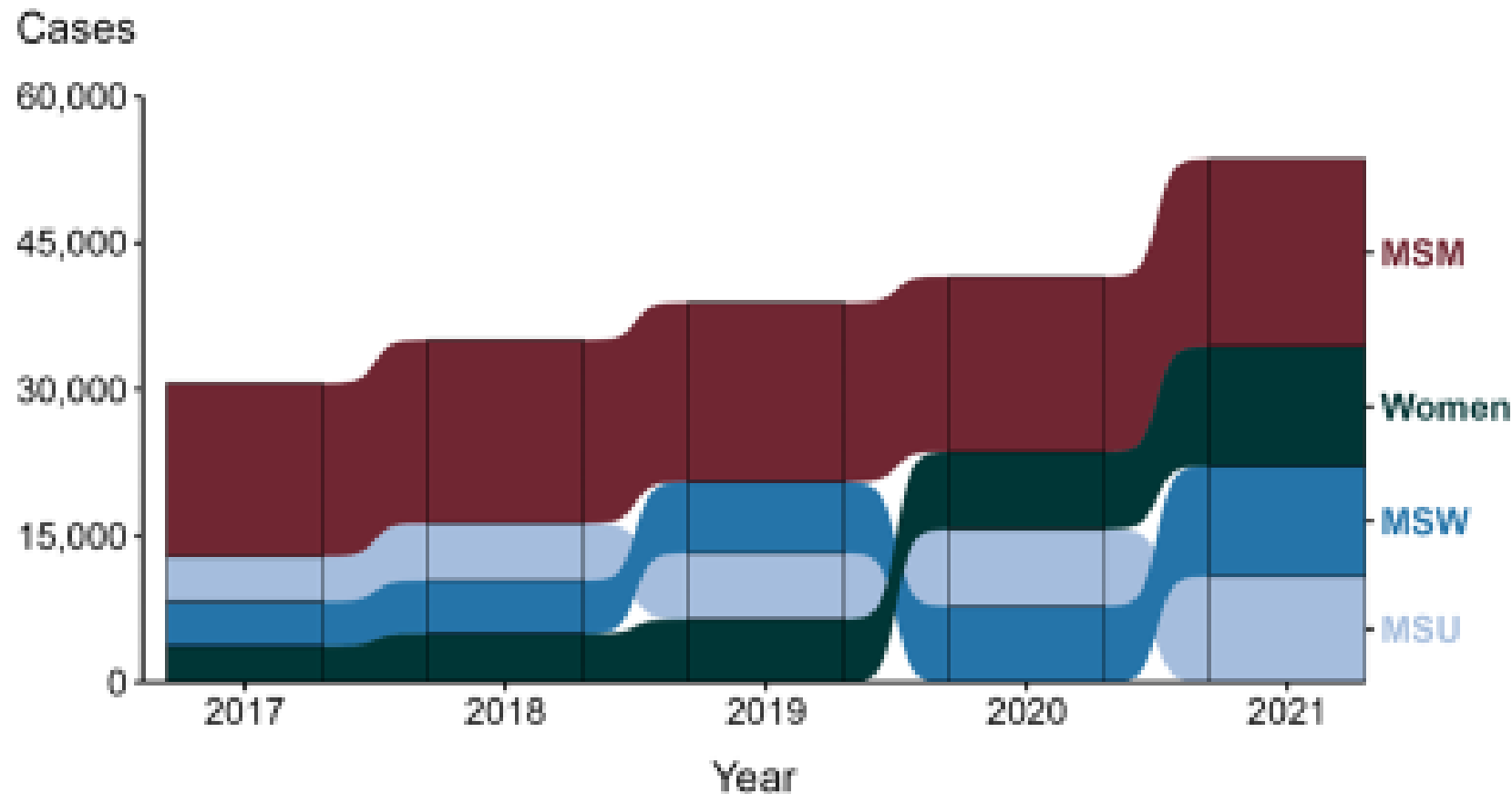
Gonorrhea — Proportion of STD Clinic Patients Testing Positive by Age Group, Sex, and Sex of Sex Partners, STD Surveillance Network (SSuN), 2021



NOTE: Results are based on data obtained from unique patients in 10 participating jurisdictions (Baltimore City, California [excluding San Francisco], Columbus, Florida, Indiana, Multnomah County, New York City, Philadelphia, San Francisco, and Washington) with known sex of sex partners attending SSuN STD clinics who were tested ≥ 1 times for gonorrhea in 2021 ($n=47,139$).



Primary and Secondary Syphilis — Reported Cases by Sex and Sex of Sex Partners, United States, 2017–2021



ACRONYMS: MSM = Gay, bisexual, and other men who have sex with men; MSU = Men with unknown sex of sex partners; MSW = Men who have sex with women only

NOTE: Over the five year period, 0.2% of cases were missing sex and were not included.



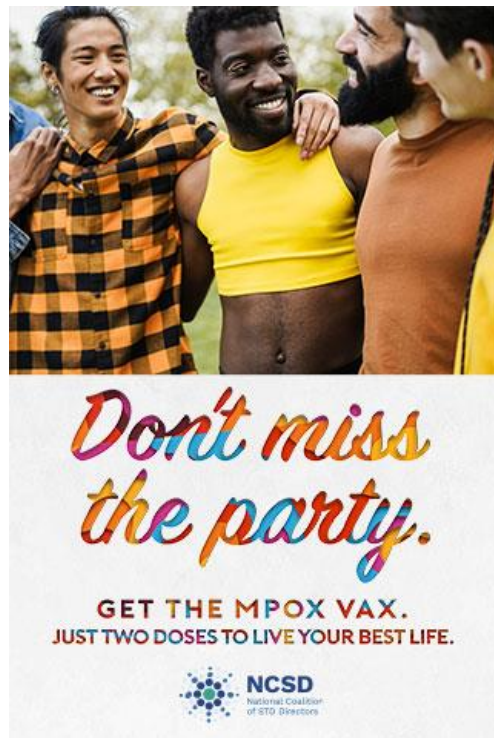


**Centering
GBMSM in the
work to reduce
America's STI
epidemic**

ELEVATING GBMSM IN EMERGING ISSUES



2022



2023

Bicillin L-A Shortage

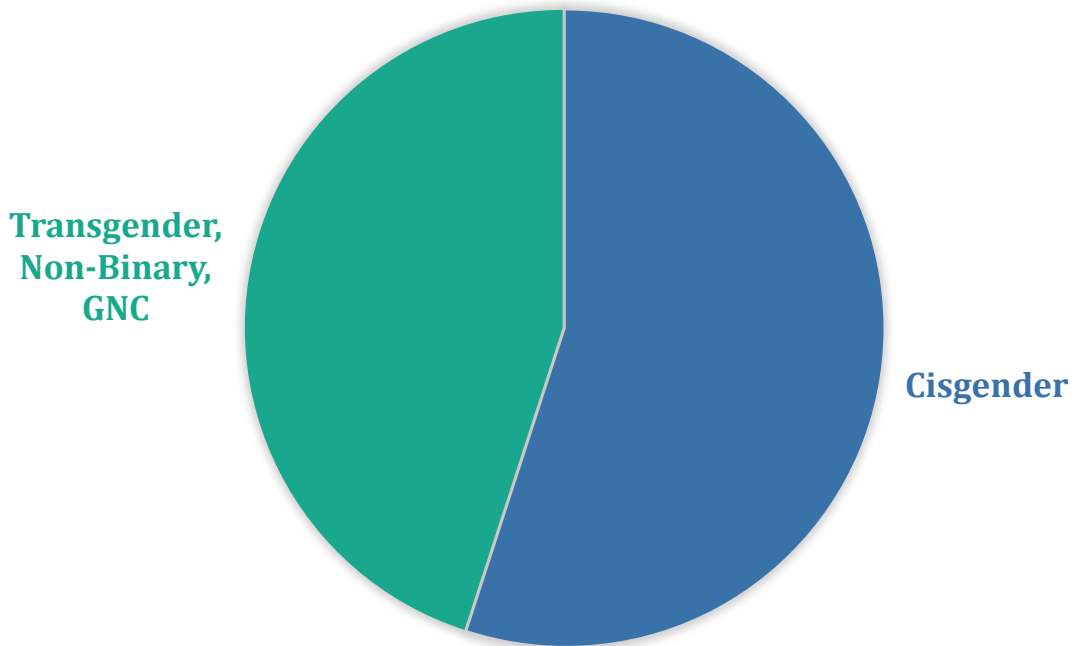


Pfizer alerts doctors to impending shortage of antibiotic for kids, will prioritize drug for pregnant adults

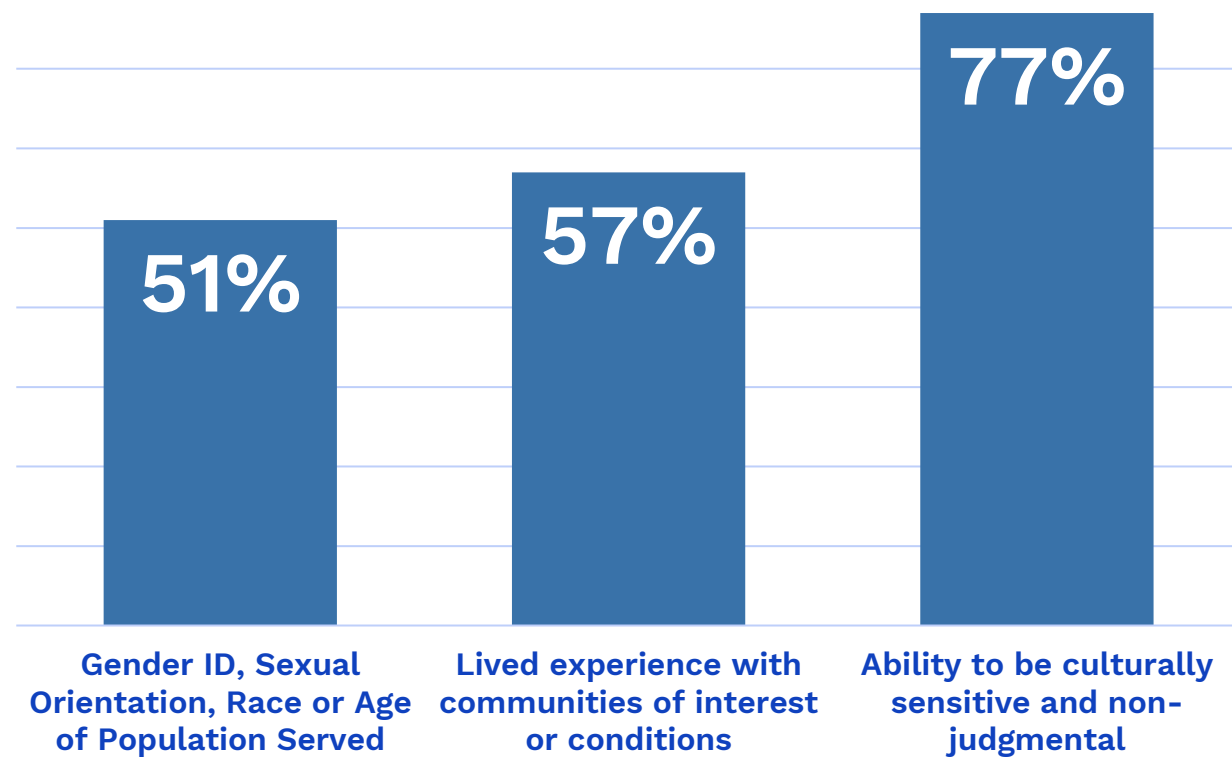
SUPPORTING A WORKFORCE OF AND FOR GBMSM



GENDER IDENTITY OF THE DIS WORKFORCE



CONSIDERATIONS WHEN HIRING DIS CANDIDATES



NCS D'S GBMSM COMMITTEE



CENTERING PLEASURE & EQUITY IN THE STI RESPONSE



THE ROCHESTER GUIDING PRINCIPLES

- 1 Recognizing sexual health goes well beyond disease prevention and management, we center pleasure and foster sexual health approaches that are holistic, multidimensional, syndemic-informed, wellness-oriented, free of stigma and shame, and serostatus neutral.
- 2 Foundational to our efforts, we embrace of equity through program tailoring, differentiated service delivery, and the distribution and/or re-distribution of resources to under-resourced communities who are most impacted by sexual health disparities.
- 3 Through a social justice lens, we actively disrupt status quo thinking and advocate vigorously across local, state, and national contexts to dismantle racist, white supremacist, and homophobic ideas, systems, and structures.
- 4 Communities provide our direction and guidance, from research through program design, implementation, and continuous quality improvement. We prioritize evidence-informed approaches that exist on the leading edge of innovation and best practice and equally value qualitative and quantitative inputs.
- 5 Celebrating the richness of our communities, we honor a wide array of racial/ethnic/cultural identities, socioeconomic statuses, geographies, ages, sexual identities, and gender expressions. We uplift and support every individual in our big, intersectional tent. We practice cultural humility and actively commit to cultural literacy 24/7/365.
- 6 We make room at every table in our big tent for new voices and perspectives, providing a robust set of opportunities for emerging talent, including engagement, mentorship, and leadership development. We deeply value the importance of stepping back and making space as we continuously endeavor to improve our multidimensional response to our quest for sexual health and wellness.
- 7 As trust is not transactional, we earn and sustain trust worthiness within the communities we serve through daily practice. We prioritize long term community relationships built on consistency, empathy, love, transparency, accountability and shared values and goals.
- 8 Our words are as important as our actions. We walk the walk with integrity and purpose, and talk the talk honestly, with humility, empathy, compassion, and cultural literacy.
- 9 We understand there are structures, systems, entities and individuals who may find these concepts new and potentially challenging. We strive to inform, educate, and advocate outside our big tent in the most endearing and effective way possible.

THE VISION OF THE PRINCIPLES

“The sexual health and wellness of gay, bisexual, and other men who have sex with men across the gender spectrum in the United States is prioritized, well-resourced, community-driven, pleasure-centered, intersectional, and founded in equity.”

ELEVATING GBMSM IN THE ONGOING STI RESPONSE



THE MSM SERVICES SELF-ASSESSMENT

Does your jurisdiction evaluate syphilis partner services outcomes for MSM?

Does your health department solicit input from the MSM community related to the quality of your MSM programming?

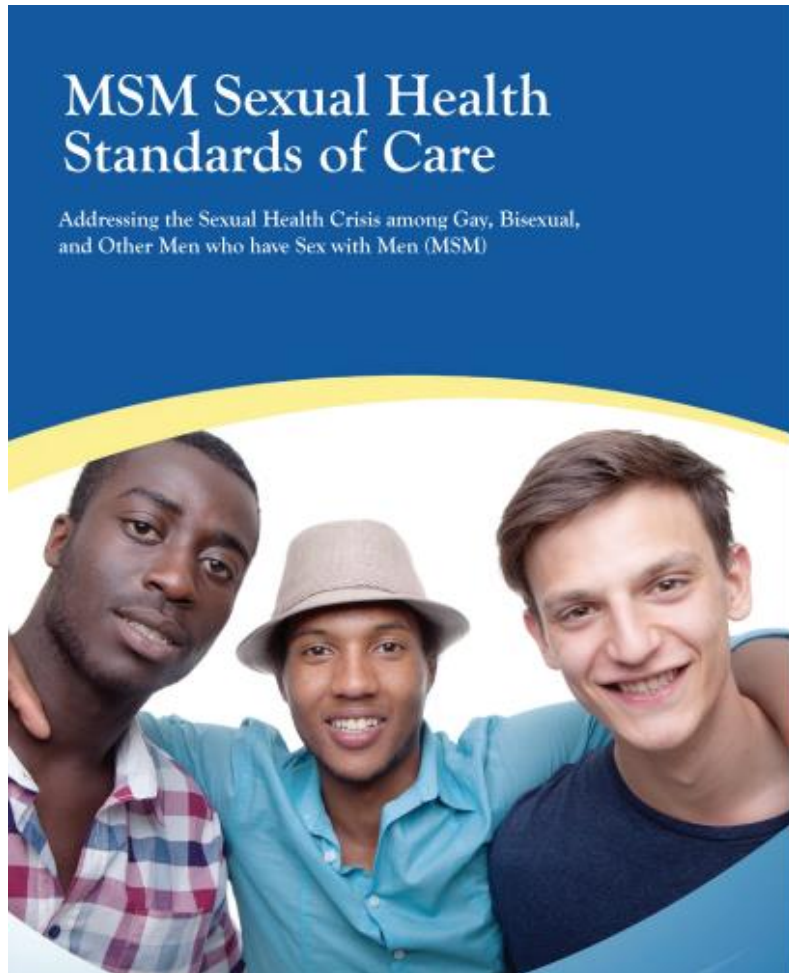
Does your jurisdiction keep and distribute an updated list of LGBTQ-friendly health providers in the area?

Does your jurisdiction use local sexual orientation and gender identity data from the Youth Risk Behavioral Survey (YRBS)?

What degree of cultural competency regarding MSM health and well-being training does your jurisdiction require?

Do you have a MSM subject matter expert on staff?

ELEVATING GBMSM IN THE ONGOING STI RESPONSE



Implementation of quality sexual health care must be set in the context of social determinants of health

MSM STANDARDS OF CARE

TOOLS YOU CAN USE RIGHT NOW



Access the NCS D Learning Center

Log in to the NCS D Learning Center or create your free account.

[LOG IN | >](#)

TOOLS YOU CAN USE RIGHT NOW

DOXY AS STI PEP COMMAND CENTER



WHAT IS DOXY AS STI PEP?

National Coalition of STD Directors

LET'S BREAK IT DOWN.

DOXY: Doxycycline, also called simply "doxy", is an antibiotic that's been in use since 1967.

STI: STI stands for Sexually Transmitted Infection (also commonly called STDs).

PEP: PEP stands for Post-Exposure Prophylaxis. Post-exposure prophylaxis is any preventive medical treatment started after exposure to an infection in order to prevent the infection from occurring.

IN OTHER WORDS: Taking doxycycline after potentially being exposed to a bacterial STI can help prevent the STI from spreading to your system and causing illness.

Doxy as STI PEP is effective in adults assigned male at birth (such as cisgender men and transgender women) and has been primarily studied in gay, bisexual, and other men who have sex with men (GBMSM) and people living with HIV.

So far, it has not been found to work for those assigned female at birth (such as cisgender women and transgender men).

No studies have yet looked at doxy as STI PEP specifically with nonbinary or intersex people, nor adolescents.

WHO CAN TAKE IT?

HOW EFFECTIVE IS IT?

When taken as prescribed, doxy leads to up to an:

88% reduction in chlamydia
87% reduction in syphilis
55% reduction in gonorrhea

It's important to note that it must be taken within 72 hours of sexual contact, ideally within 24 hours.

WHAT ABOUT ANTIBIOTIC RESISTANCE?

There are a lot of factors to consider when it comes to antibiotic resistance and using doxy as STI PEP. While antimicrobial resistance is an important threat to watch, many experts also emphasize that using doxy as STI PEP for a specific demographic of people pales in comparison to the use of antibiotics in other industries.

For context, doxycycline has already been in use as PEP for other infections, like malaria and Lyme's disease, and is also prescribed long-term for the treatment of acne.

PROTECTING OUR FUTURE



HEALTH CARE

STDs are at record levels. It could get much worse.

People with already high risk for HIV could lose access to free PrEP and testing.

health Life, But Better Fitness Food Sleep Mindfulness Relationships

CDC facing major funding cuts, with direct impact on state and local health departments

Questions?

David C. Harvey

Executive Director

dharvey@ncsddc.org



NCSDDC

National Coalition
of STD Directors