

# NASTAD Regional Forum Addressing Racial and Ethnic Health Disparities

## “National Partnerships: Developing a Way Forward”

**Edna Davis-Brown, M.P.H.**

**Behavioral and Social Science Volunteer (BSSV) Program  
American Psychological Association  
Washington, DC**

March 25, 2009



Behavioral and Social Science Volunteer Program  
NASTAD Regional Forum Orientation Webinar  
February 26, 2009



AMERICAN  
PSYCHOLOGICAL  
ASSOCIATION

# Greetings and Introductions

Share with us your name, title/role,  
affiliation and information  
about your agency/organization



Behavioral and Social Science Volunteer Program  
NASTAD Regional Forum Orientation Webinar  
February 26, 2009



AMERICAN  
PSYCHOLOGICAL  
ASSOCIATION

# Session Purpose

- To further discuss factors and issues relating to HIV/AIDS and Black women
- To discuss/share initiatives that address HIV/AIDS and Black women and other contributing co-factors
- To discuss/share how national partners can contribute to the dialogue
- To discuss what should happen after this forum to continue the dialogue



Behavioral and Social Science Volunteer Program  
NASTAD Regional Forum Orientation Webinar  
February 26, 2009



AMERICAN  
PSYCHOLOGICAL  
ASSOCIATION

# Some Key Questions

- What are some initiatives that address HIV/AIDS and other contributing co-factors for risky behavior among Black women?
- How can research better inform programs around psychosocial issues?
- How can programs more effectively utilize researchers?



Behavioral and Social Science Volunteer Program  
NASTAD Regional Forum Orientation Webinar  
February 26, 2009



AMERICAN  
PSYCHOLOGICAL  
ASSOCIATION

# Some Key Questions (cont'd)

- How can national partners contribute to the dialogue?
- How do we get more Black women involved in the relevant discussions?
- What is the first thing that should happen post-regional forum to continue the dialogue?



# The BSSV Program

A Program Providing FREE  
and ONGOING Behavioral/Social Science  
Technical Assistance

- Funded by CDC since 1996
- One of CDC's Technical Assistance Partners
- Links local scientists with HIV Planning and Prevention efforts in their communities
- Scientists volunteer their skills and experience in their communities



Behavioral and Social Science Volunteer Program  
NASTAD Regional Forum Orientation Webinar  
February 26, 2009



AMERICAN  
PSYCHOLOGICAL  
ASSOCIATION

# The BSSV Program (cont'd)

- Mobilize behavioral and social scientist **volunteers** to assist with HIV prevention activities
- Develop local capacity for **ongoing** technical assistance
- Promote **successful** collaborations between academic institutions, health departments, community-based organizations (**CBOs**) involved with HIV prevention and HIV Prevention Community Planning Groups (**CPGs**)



Behavioral and Social Science Volunteer Program  
NASTAD Regional Forum Orientation Webinar  
February 26, 2009



AMERICAN  
PSYCHOLOGICAL  
ASSOCIATION

# We Do This By....

- **Recruiting** behavioral and social scientists as volunteers (BSSVs)
- Providing **training/orientation** on HIV prevention and community planning
- **Linking a BSSV** with the local CBO, CPG or Health Department for Technical Assistance (TA)



Behavioral and Social Science Volunteer Program  
NASTAD Regional Forum Orientation Webinar  
February 26, 2009



AMERICAN  
PSYCHOLOGICAL  
ASSOCIATION

# Types of TA We Provide

- Evaluation
- Needs assessments
- Planning and implementing evidenced-based interventions (EBIs) for HIV Prevention
- Adapting EBIs for new settings and populations
- Using behavioral science and theory with community planning
- Strengthening RFPs and Writing grant proposals

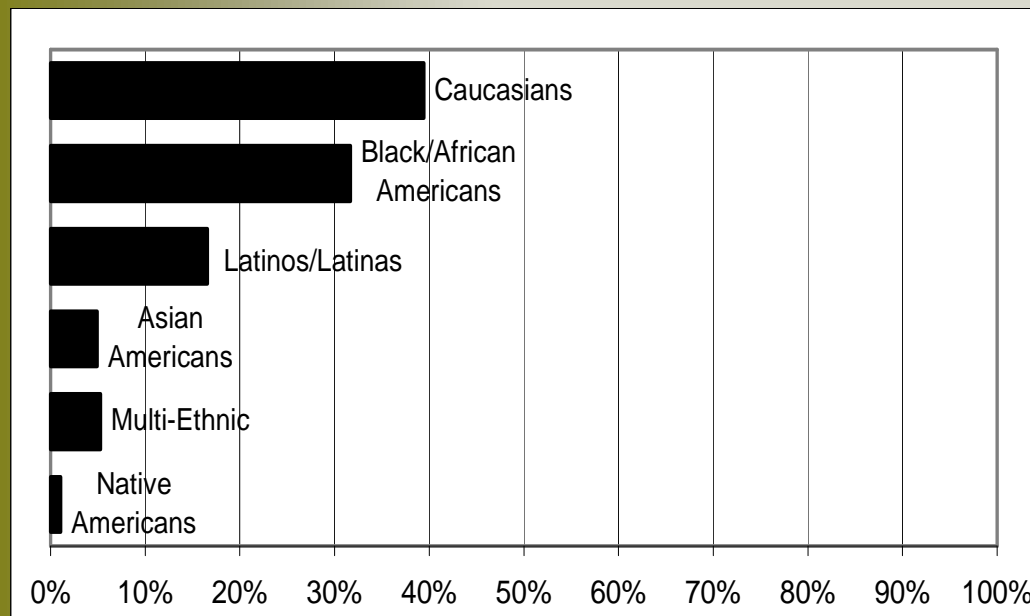


Behavioral and Social Science Volunteer Program  
NASTAD Regional Forum Orientation Webinar  
February 26, 2009



AMERICAN  
PSYCHOLOGICAL  
ASSOCIATION

# Our BSSVs: Gender/Race Ethnicity Profile



N = 284

## GENDER AND RACE/ETHNICITY

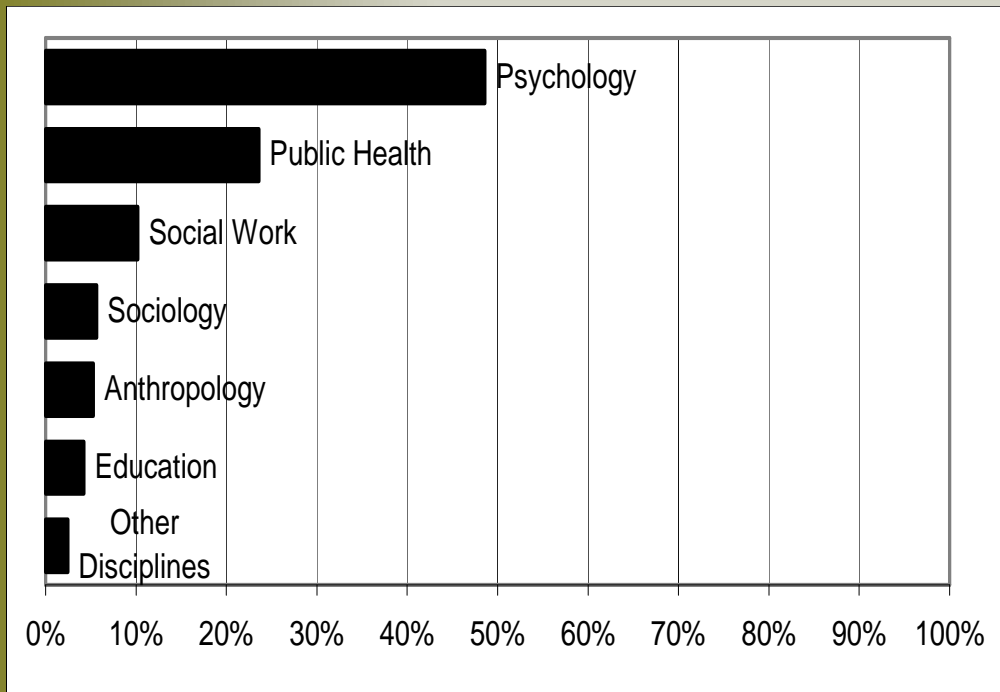
There are 284 volunteers.

Of these volunteers, 94 are males and 190 are females.

Caucasians	39%
Black/African Americans	32%
Latinos/Latinas	17%
Asian Americans	5%
Multi-Ethnic	5%
Native Americans	1%
Missing Data	1%

**% of Minority BSSVs = 60%**

# Our BSSVs: Discipline Profile

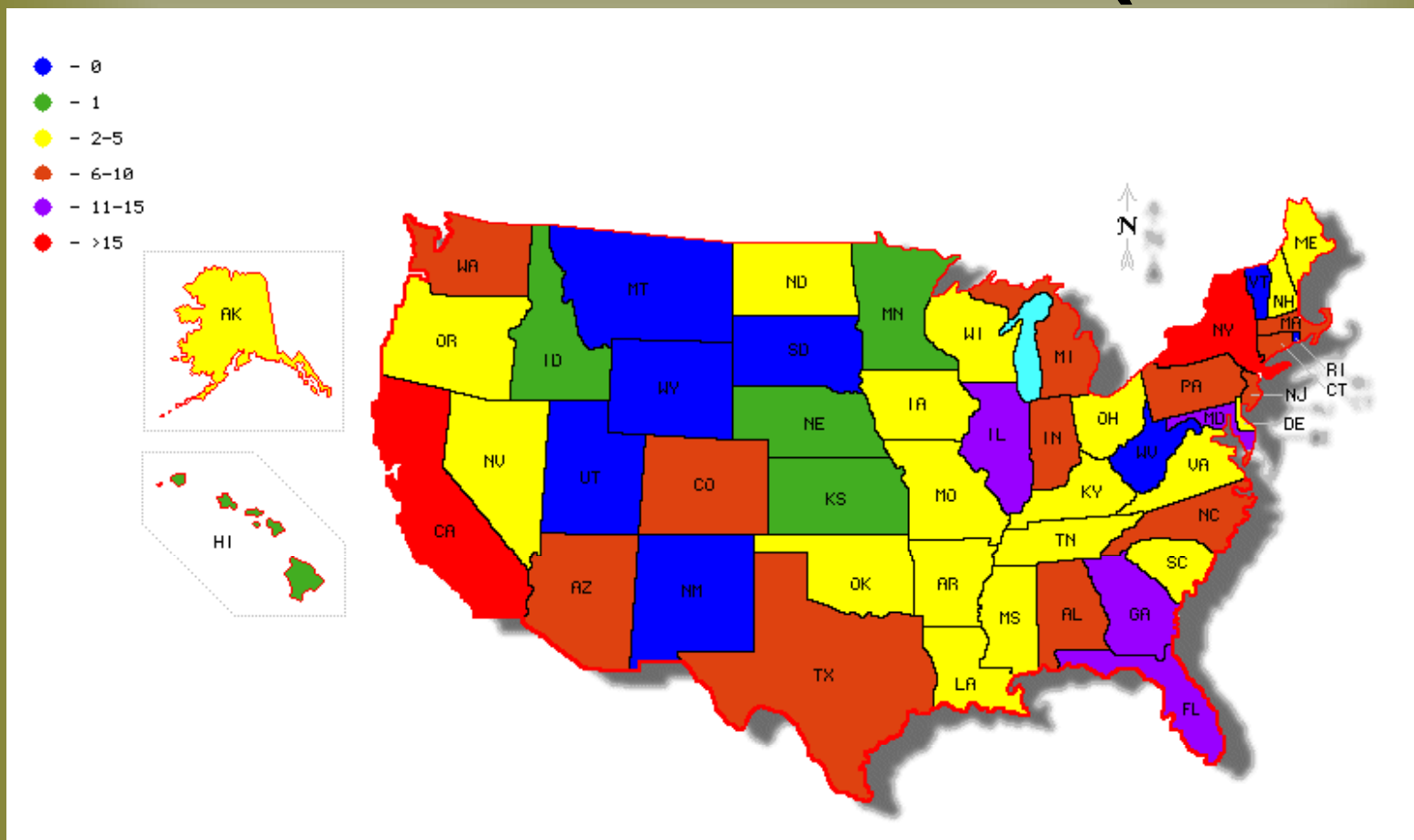


## DISCIPLINES

Psychology	49%
Public Health	24%
Social Work	10%
Sociology	6%
Anthropology	5%
Education	4%
Other Disciplines (i.e. family studies, American Studies)	2%

N = 284

# Our BSSVs: A Profile (cont'd)



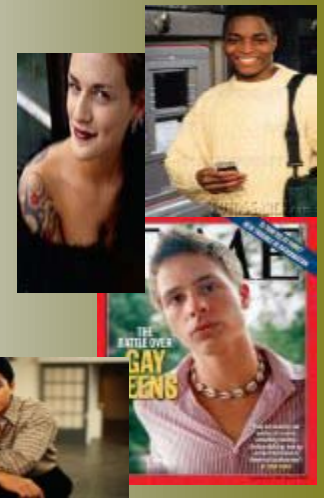
\*Puerto Rico has 6 active BSSVs.

# Advantages of Being A BSSV

- BSSVs provide CBA where they live and work...local and ongoing assistance is BETTER
- A means to demonstrate your personal commitment to HIV/AIDS prevention
- Opportunities to contribute in a meaningful way
- Linked to a network of professionals across the US and US Territories

## We Offer Advanced Webinar Trainings :

- SISTA Adaptation Overview – February 2009
- Program Evaluation – ( 3 Sessions) April 2009
- Recruitment and Retention – May 2009



Behavioral and Social Science Volunteer Program  
NASTAD Regional Forum Orientation Webinar  
February 26, 2009



AMERICAN  
PSYCHOLOGICAL  
ASSOCIATION

# NASTAD Initiative: Overall Goals for BSSVs

Establish a working relationship between the BSSV Program and state health department officials dealing with HIV/AIDS in the participating Southeastern States.

- Want them to know what the BSSV Program has to offer
- Want us to know what they need

Establish a working relationship between the BSSV Program and local health department officials dealing with HIV/AIDS in the participating Southeastern States.

- Want them to know what the BSSV Program has to offer
- Want us to know what they need



Behavioral and Social Science Volunteer Program  
NASTAD Regional Forum Orientation Webinar  
February 26, 2009



AMERICAN  
PSYCHOLOGICAL  
ASSOCIATION

# State Level Incidence and Prevalence

We encourage you to visit the links below to get more info about the HIV/AIDS incidence, prevalence, etc. in your State

- **Alabama- HIV/AIDS**  
<http://www.adph.org/aids/assets/BriefFacts.pdf>
- **Florida- HIV**  
[http://www.doh.state.fl.us/disease\\_ctrl/aids/trends/epiprof/epiprof\\_minorities\\_2006.pdf](http://www.doh.state.fl.us/disease_ctrl/aids/trends/epiprof/epiprof_minorities_2006.pdf)
- **Georgia**  
<http://health.state.ga.us/pdfs/epi/cdiee/2007WomensHealthReport.pdf>
- **Louisiana- HIV**  
<http://www.dhh.louisiana.gov/offices/publications/pubs-264/2005-06%20Annual%20Report.pdf>



Behavioral and Social Science Volunteer Program  
NASTAD Regional Forum Orientation Webinar  
February 26, 2009



AMERICAN  
PSYCHOLOGICAL  
ASSOCIATION

# State Level Incidence and Prevalence (cont'd)

We encourage you to visit the links below to get more info about the HIV/AIDS incidence, prevalence, etc. in your State

- North Carolina

<http://www.epi.state.nc.us/epi/hiv/pdf/std07rpt.pdf>

- Georgia

<http://health.state.ga.us/pdfs/epi/cdiee/2007WomensHealthReport.pdf>

- Mississippi

<http://www.msdh.state.ms.us/msdhsite/index.cfm/14,1185,150,html>

- Tennessee

[http://health.state.tn.us/STD/PDFs/Epi\\_Profile2005.pdf](http://health.state.tn.us/STD/PDFs/Epi_Profile2005.pdf)



Behavioral and Social Science Volunteer Program  
NASTAD Regional Forum Orientation Webinar  
February 26, 2009



AMERICAN  
PSYCHOLOGICAL  
ASSOCIATION

# Moving Forward



# For More Information Contact...



**Edna Davis-Brown, M.P.H.**  
**BSSV Program Director**  
**American Psychological Association**  
**750 First Street, NE**  
**Washington, D.C. 20002-4242**  
**Phone: 202.336.6176**  
**Fax: 202.336.6198**  
**[edavis-brown@apa.org](mailto:edavis-brown@apa.org)**



Behavioral and Social Science Volunteer Program  
NASTAD Regional Forum Orientation Webinar  
February 26, 2009



AMERICAN  
PSYCHOLOGICAL  
ASSOCIATION