



Bridging Science, Policy and Public Health

HIV and Viral Hepatitis in the Correctional System:

Addressing the Needs of the Incarcerated and Recently Released

Prevention Networking Group
Viral Hepatitis Work Group

April 10, 2008

Webinar Objectives

- Describe current correctional health programs in Massachusetts and Broward County, Florida
- Describe HIV and hepatitis prevention, screening, and care services for inmates and ex-offenders in Massachusetts and Broward County, Florida
- Describe efforts at the Federal level to address HIV and hepatitis in correctional settings
- Discuss lessons learned, policy and program implications and next steps

Webinar Agenda

- Welcome & Overview
- A Continuum of Care for Inmate and HIV+ Ex-Offender Populations in Massachusetts
 - Eduardo E. Nettle, MDPH/HAB
 - Ollie Wise, Essex Sheriff's Department
 - Annie Montgomery, Span Inc.

Jail Initiatives: From Incarceration to the Community

- Rick Mendiola, AIDS Program Office, Broward County Health Department
- A Conversation with CDC
 - Laurie Reid
 - Hugh Potter

HIV Correctional Health: A Continuum of Care for Inmate and HIV+ Ex-Offender Populations in Massachusetts

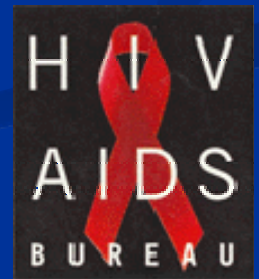
Eduardo E. Nettle, MDPH/HAB

Ollie Wise, Essex Sheriff's Department

Annie Montgomery, Span Inc.



HIV & Hepatitis in Correctional Systems
- NASTAD Webinar



Presentation Objectives

- Outline current correctional health program funded by the MDPH/HAB
- Describe HIV prevention, screening, and care services for inmates and ex-offenders
- Review lessons learned, policy and program implications

Current Practice—Client Populations

- Vulnerable populations in corrections:
 - 1) Inmates in prisons and jails
 - 2) HIV+ reintegrating ex-offenders
 - 3) Youth detainees



Current Practice—Service Scope

■ Massachusetts County Jails (MCJ)

- Programs in all 13 county Sheriff's Departments
- Massachusetts Department of Corrections (DOC) with 17 affiliated facilities



■ Corrections-to-community reintegration (CTC)

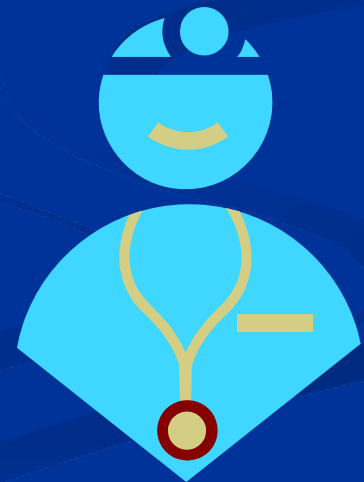
- CDC/HRSA Corrections Demonstration Project
- Procured with Massachusetts state resources in 2006
- Intensive case management through 5 regional, community-based agencies

■ HIV correctional health services for youth detainees

- Services provided in the Department of Youth Services (DYS) facilities across the Commonwealth
- Mostly HE/RR and CTR for at-risk youth

Massachusetts County Jail (MCJ)— Program Components

- HE/RR
- HIV counseling, testing & referral (CTR)
- Correctional medical management services (CMMS)



Essex County Sheriff's Department

- Brief description of the facility
- Context of the work
 - Demographics
 - Inmate characteristics (adjudicated/pre-adjudicated)
 - HIV burden

Essex continued

- Inmate case study
 - HE/RR
 - HIV counseling, testing & referral
 - CMMS
 - Special programs

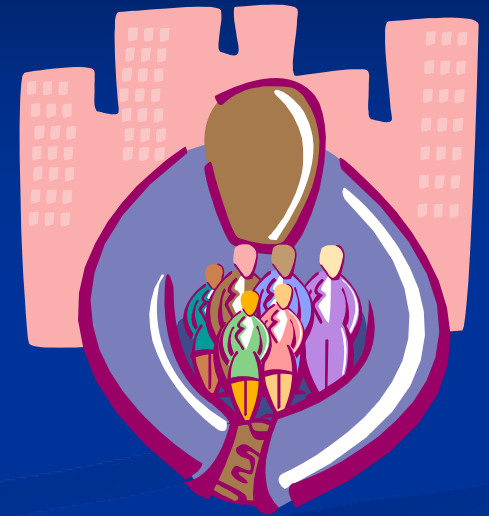
Corrections-to-Community (CTC)

Background

- Statewide program to serve HIV+ ex-offenders
- Intensive case management pre- and post-release
- Evaluation demonstrated enhanced linkage to HIV primary care.
 - Ninety-two percent (92%) of HIV+ inmates accessed primary care within two weeks post-release
 - Recidivism rate of 7% in one year among program clients versus Massachusetts state average of 20% per year
 - Ninety-seven percent (97%) of clients completed an appointment for social/support services with two weeks post-release

Corrections-to-Community (CTC) Program Components

- Assessment/reassessment
- Reintegration service planning
- Positive prevention
- Linkage to primary HIV care
- Supported referral to mental health and substance use treatment
- Housing search assistance



Span, Inc.

- Agency description
- Reintegration services for HIV+ ex-offenders
- Case study

Span, Inc. Continued

- Project *START* initiative
 - Description of the intervention
 - Implementation with high risk negative clients
 - Evaluation with HIV+ ex-offender cohort

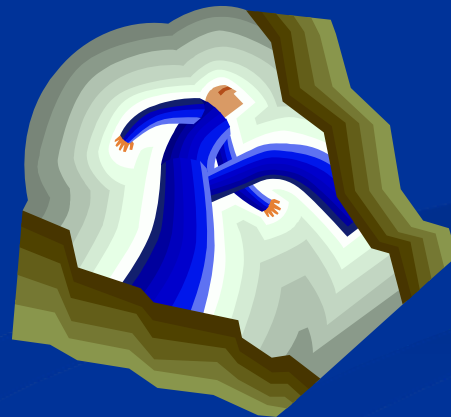
Challenges—Prison/Jail Settings

- Prevention messages in corrections need to be tailored based on facility rules
- Peer administered programming
- Alignment with corrections objectives/policies



Challenges—Reintegration

- CORI regulations—employment, housing
- Limited transitional housing options
- Complex access to primary care/mental health
- Inadequate substance use treatment services
- Stigma/discrimination based on ex-offender status



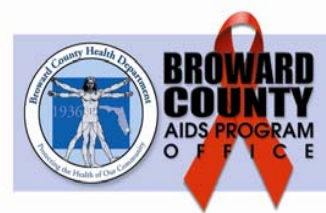
Lessons Learned

- Importance of relationship building with corrections partners
- Respect and appreciation for the primary function of correctional services
- Public health investment in corrections complements and supports security and public safety objectives
- Linkage between corrections- and community-based providers is essential to achieve public health outcomes

Jail Initiatives:
From Incarceration to the Community

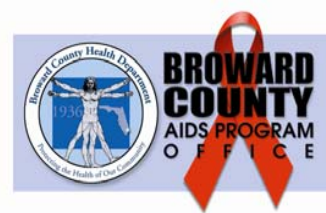
AIDS Program Office
Broward County Health
Department

**Florida Department of Health
Bureau of HIV/AIDS and Hepatitis**



HIV/AIDS in Florida

- Florida HIV/AIDS cases
 - 46,663 – HIV (3rd)
 - 105,614 – AIDS (3rd)
- South Florida – AIDS cases
 - Ft. Lauderdale 16,674
 - Miami 30,215
 - West Palm Beach 9,915
- HIV/AIDS Surveillance Report through 2006 (Vol.18)



AIDS Program Office - BCHD

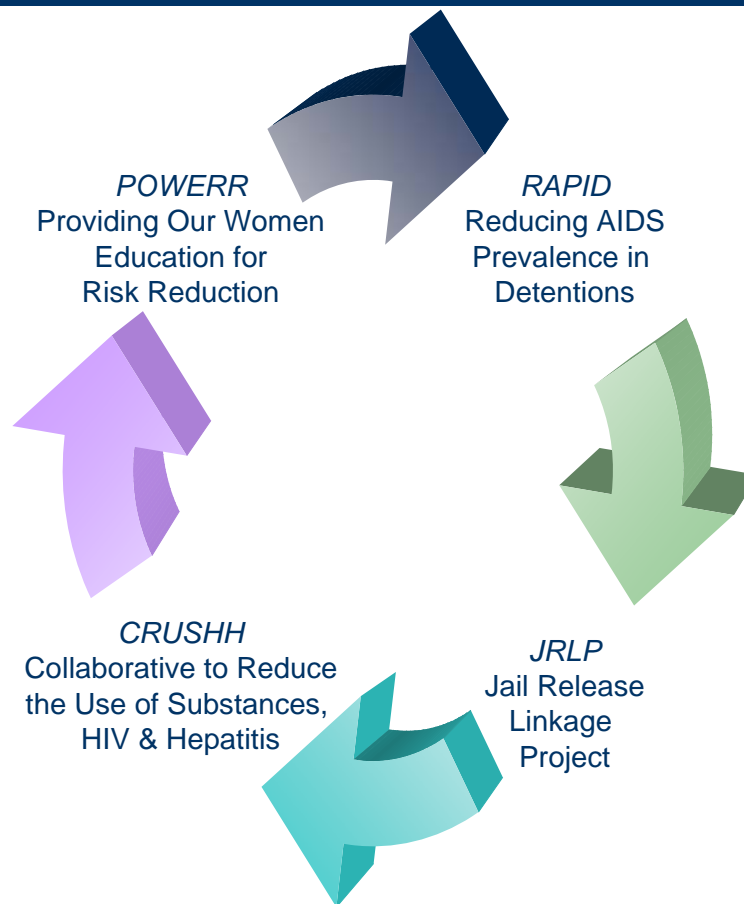
- Patient Care Services
- Community Planning
- Regional Minority Network
- Early Intervention
 - Counseling & Testing
 - Technical Assistance & Contract Management
 - Special Projects
- Jail – based Programs

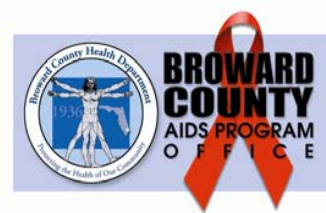


Broward County Jails

- Over 100,000 inmates in a year
- Over 200 HIV Positive inmates at anytime
- BCHD services to over 6,000 inmates/year

Jail – based Programs

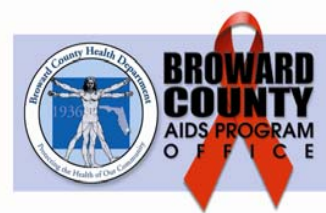




POWER

Providing Our Women Education for Risk Reduction

- To provide group and individual level HIV/STD prevention interventions to women who have incarcerated partners at 5 county jails
- To provide risk assessment and HIV prevention skill building tools
- To increase community awareness regarding HIV in jail populations
- To improve access to early intervention services for women at increased risk for HIV/AIDS
- To provide access and referrals for HIV



POWER

Providing Our Women Education for Risk Reduction

- Program Description – 10 to 15 minutes (SISTAS, VOICES, Community Promise)
 - Basic HIV information
 - HIV prevention
 - Condom negotiation skills
 - HIV testing
 - Referrals (HIV, STD, Hepatitis, Domestic Violence, Substance Abuse)

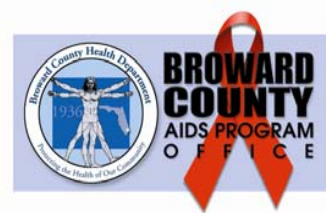


POWER

Providing Our Women Education for Risk Reduction

- **Program Highlights**

- Participants complete survey (knowledge, condom use, HIV testing)
- Access and referrals to HIV testing
- Provides training to staff
- Participates at various meetings with a focus of women
- Once a year community-wide event with focus on HIV prevention and skills building activities for female partners of incarcerated men



POWER

Providing Our Women Education for Risk Reduction

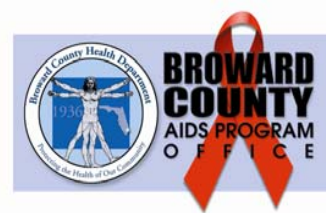
- **Program Highlights**
 - More than 4,500 women have received information and participated in skill building sessions
 - Approximately 20% of those women accessed HIV counseling and testing services



RAPID

Reducing AIDS Prevalence in Detentions

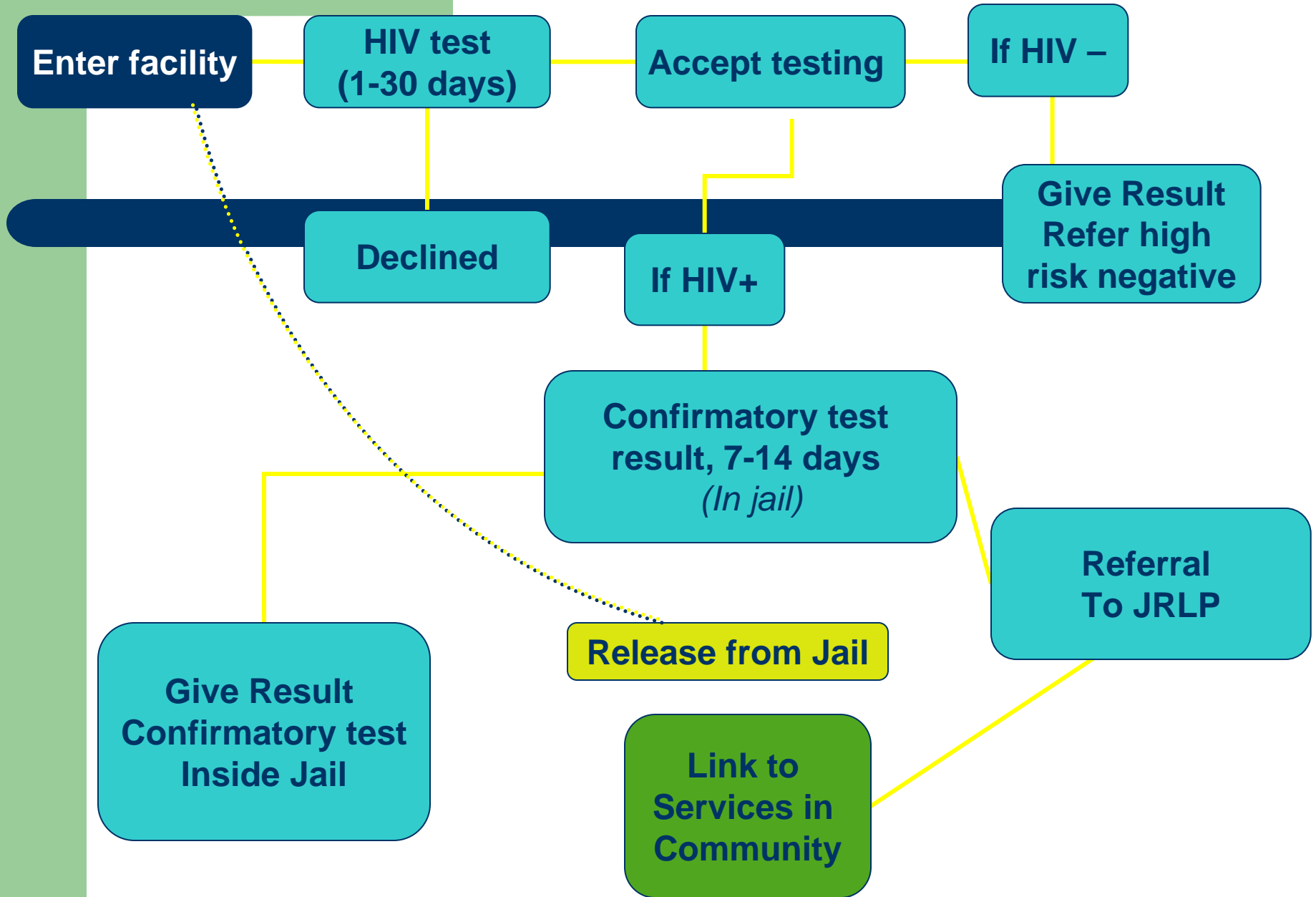
- Jail-based testing program that provides rapid HIV testing to inmates (male and female) at 5 county jails
- Successful collaboration between BCHD and county jail programs
 - Armor
 - Broward Sheriff's Office

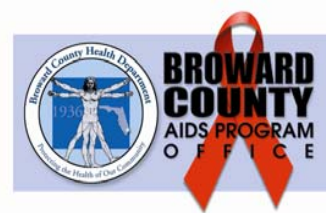


RAPID

Reducing AIDS Prevalence in Detentions

- **Program Goals**
 - Increase access to HIV testing
 - Increase proportion of inmates who know their HIV status
 - Increase linkage to prevention, care and treatment for HIV positive inmates
 - Increase testing to prevent new cases





RAPID

Reducing AIDS Prevalence in Detentions

- **Program Highlights**

- More than 15,000 inmates have been tested
- 2007 – 5,231 rapid HIV tests (18% of Florida total)
- 1.8% positivity rate for females
- 0.9% positivity rate for males
- 100% of inmates who have tested positive have been referred to JRLP (Jail Release Linkage)



JRLP

Jail Release Linkage Project

- Collaborative program with Broward Sherriff's Office, Armor and local CBOs since 1998
- Monthly/quarterly meetings to address challenges
- Pre-Release Plan/Protocol
- Post-Release/Protocol
- Follow-up



JRLP

Jail Release Linkage Project

- To improve the health delivery system to inmates while incarcerated
- To provide comprehensive discharge planning thru community linkages to ensure continuous quality health care upon release
- To reduce the incidence of recidivism
- To encourage HIV counseling & testing
- To advocate on their behalf while incarcerated and upon release into the community



JRLP

Jail Release Linkage Project

- **Project Outcomes**

- To date, over 3,000 intake assessments and follow-up services have been provided
- Increased the number of inmates with HIV and linked to care & treatment
- Increased monitoring of adherence, linkage, and access to care & treatment
- Community Benefits – 90% JRLP clients linked to medical care/social services



CRUSHH

Collaborative to Reduce the Use of Substances, HIV and Hepatitis

- Research Project with two components:
 - A collaborative of community stakeholders
 - An intervention which provides protective skill sets to minority and minority re-entry populations



CRUSHH

Collaborative to Reduce the Use of Substances, HIV and Hepatitis

- **Program Goals**

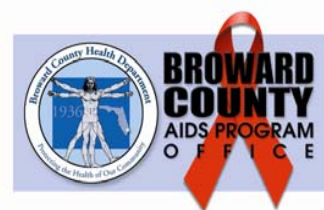
- To improve the overall condition of persons living with, affected by, and/or at-risk of contracting, HIV or hepatitis and substance abuse, by implementing evidence-based training, outreach and prevention interventions in minority and minority re-entering communities
- To share cutting edge prevention techniques focused on leading a healthy lifestyle with Broward's most at risk and underserved communities



CRUSHH

Collaborative to Reduce the Use of Substances, HIV and Hepatitis

- Program Intervention
 - Four – 120 minute training sessions over a 30 day period
 - Communication skills, risk & protective behaviors, substance use, HIV/STD/Hepatitis prevention
 - VOICES/VOCES
 - HIV counseling & testing
 - Hepatitis screening



CRUSHH

Collaborative to Reduce the Use of Substances, HIV and Hepatitis

- **Program Data Collection & Evaluation**
 - 135 questionnaire completed at 3 different times during the intervention (baseline, exit, follow up)
 - All data is being compiled, analyzed, and evaluated by NOVA Southeastern University
 - Currently – 237 participants enrolled; 270 tested for HIV; 191 tested for Hepatitis (all referred to Hepatitis A & B vaccination)
 - 19 cohorts – 179 participants – 76% completing all sessions



CRUSHH

Collaborative to Reduce the Use of Substances, HIV and Hepatitis

- **New Initiatives**
 - Developing an educational video tailored for the re-entry population
 - Video is an adaptation of VOICES/VOCES
 - Ongoing evaluation by NOVA



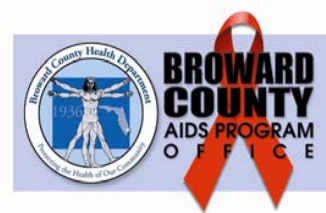
Challenges

- Working in jail environments (high stress, lock downs)
- Location of waiting areas (outside the jail building)
 - Ensuring confidentiality
 - Distribution of condoms and literature



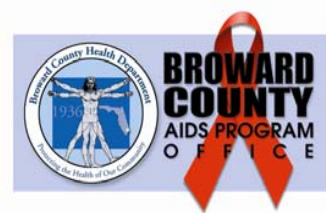
Challenges

- Criminal history ineligible for most housing & have difficulty securing employment
- Mental health, drug addiction, poverty, homelessness upon return
- Unconventional hours or release – transportation and linkage becomes a difficult



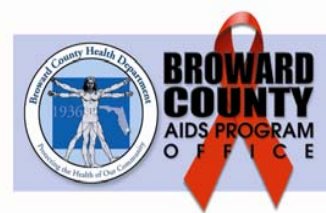
What works...

- MOUs/MOAs with agencies
- Working/collaborative relationships with local and state DOCs (jails, prisons)
- Flexibility to continue to explore innovative strategies to access the population



Program Funding

- **POWERR** National AIDS Fund -
Community Foundation of
Broward
- **RAPID &
JRLP** Florida Dept of Health –
Bureau of HIV/AIDS
- **CRUSHH** SAMHSA



More Information contact:

AIDS Program Office

954.467.4779

Ricardo_Mendiola@doh.state.fl.us



Bridging Science, Policy and Public Health

HIV and Viral Hepatitis in the Correctional System:

Addressing the Needs of the Incarcerated and Recently Released

A Conversation with CDC

Laurie Reid and Hugh Potter

Group Discussion

- What are states doing to meet the HIV and hepatitis prevention needs of incarcerated individuals and individuals who have recently been released from correctional settings?
- What are some of the lessons learned in developing, implementing, and/or evaluating HIV and hepatitis programming in correctional settings?

Next Steps

- How can your jurisdiction increase HIV and hepatitis prevention activities for the incarcerated and recently released?
- What can you do in your position to increase HIV and hepatitis prevention activities for the incarcerated and recently released?
- What support do you need from NASTAD, CDC and/or other national organizations or federal funders to increase HIV and hepatitis prevention activities for the incarcerated and recently released?

For More Information

Eduardo Nettle

Eduardo.Nettle@state.ma.us

Rick Mendiola

Ricardo_Mendiola@doh.state.fl.us

Laurie Reid

AXU2@CDC.gov

Hugh Potter

HBP3@CDC.gov

Connie Jorstad (NASTAD) cjorstad@NASTAD.org

Natalie Cramer (NASTAD) ncramer@NASTAD.org

Chris Taylor (NASTAD) ctaylor@NASTAD.org

Thank You!

- Presenters
 - Eduardo Nettle (MA)
 - Ollie Wise (MA)
 - Annie Montgomery (MA)
 - Rick Mendiola (FL)
 - Laurie Reid (CDC)
 - Hugh Potter (CDC)
- Call/Webinar Participants
- NASTAD Work Groups
 - Prevention Networking Group
 - Viral Hepatitis Work Group
- NASTAD Staff
 - Dave Kern
 - Natalie Cramer
 - Chris Taylor