

# Viral Hepatitis Surveillance in New Mexico

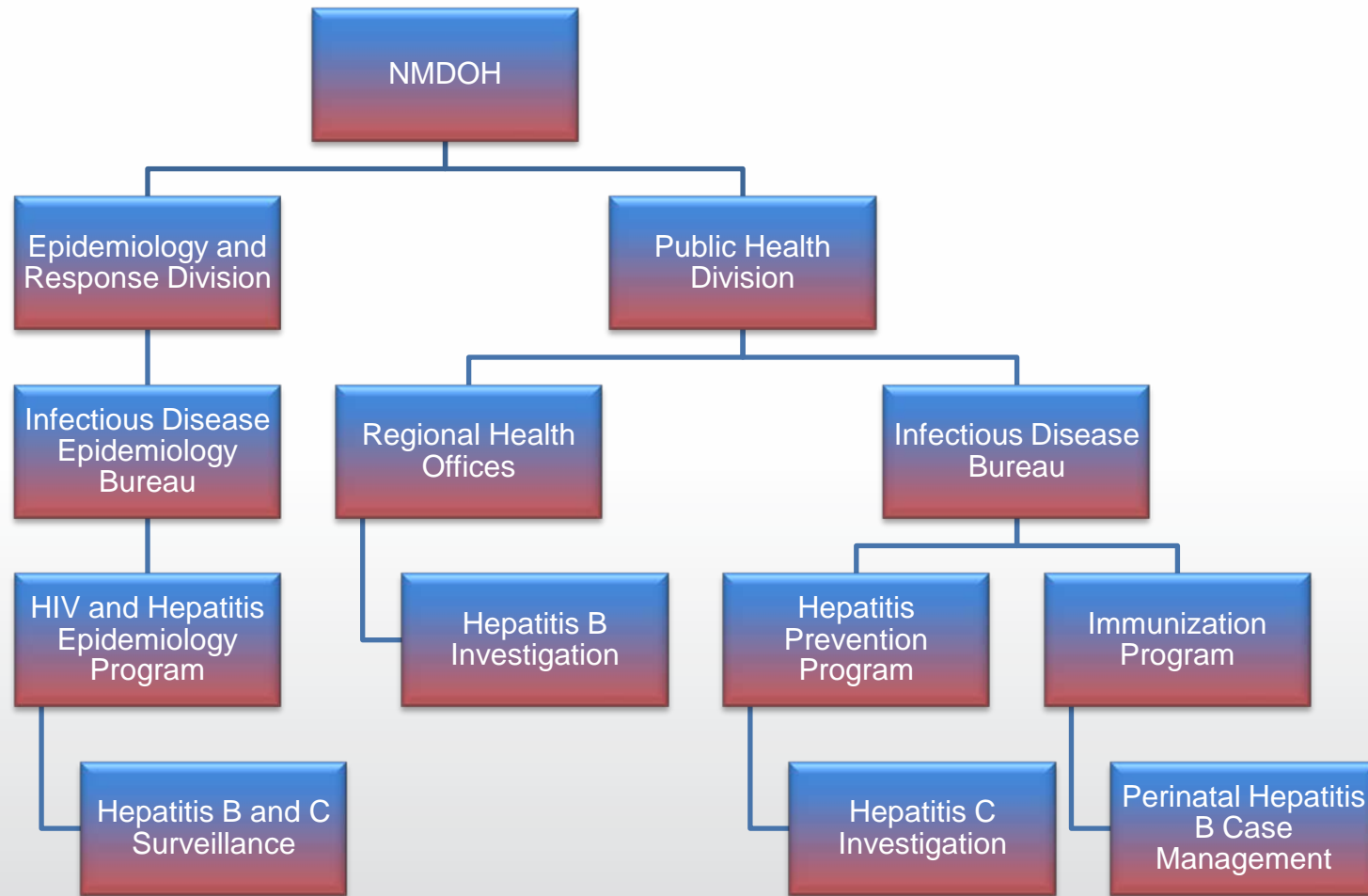
NASTAD Adult Viral Hepatitis  
Prevention Coordinators  
Technical Assistance Meeting  
Terry Bryant, MS  
October 18, 2011

# New Mexico

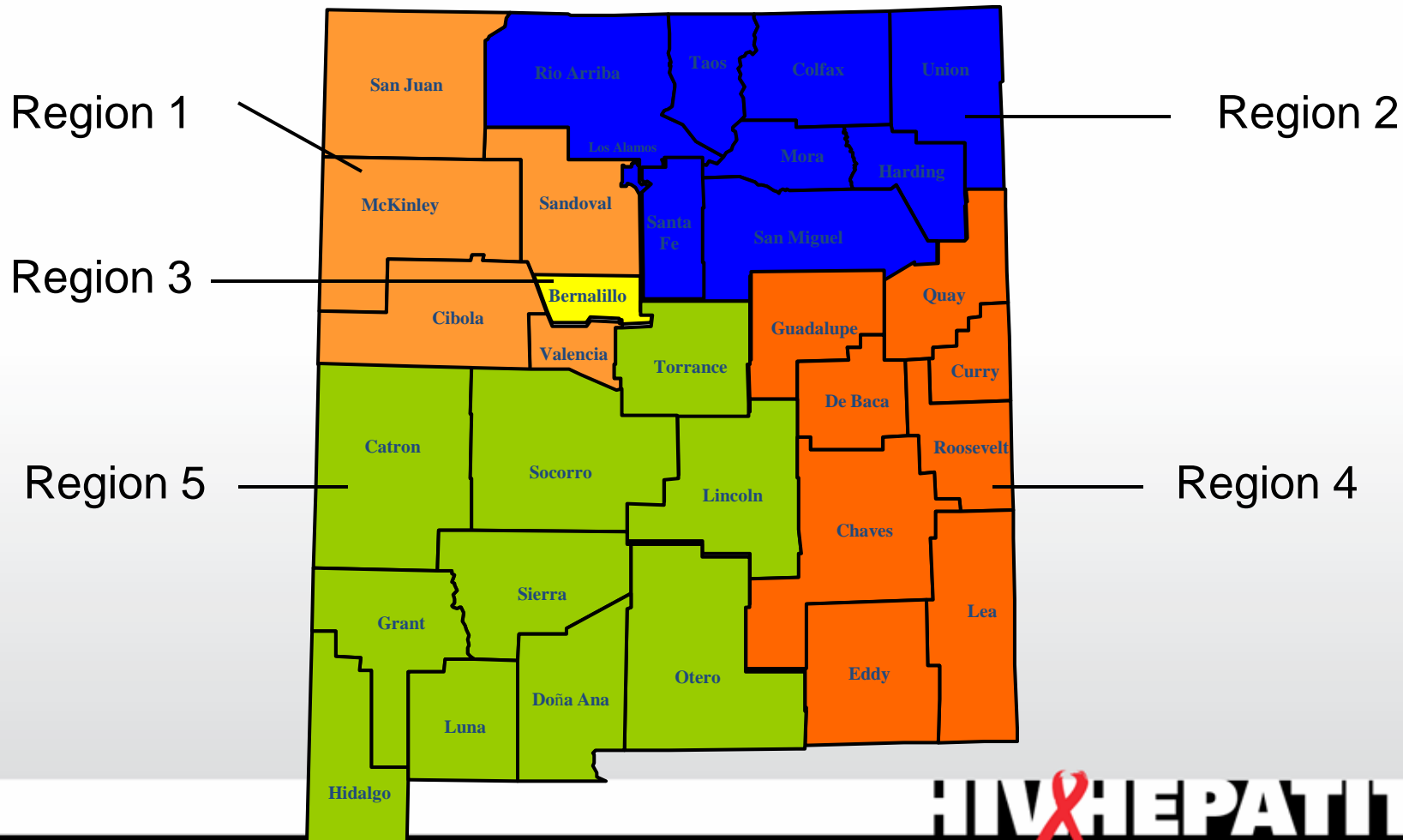


- 2 million people
- 1/3 population resides in Bernalillo Co.
- 15 persons per square mile
- Majority-minority state
- Shared border w/ five states and Mexico
- Navajo, Apache and 19 Pueblos

# Organizational Structure



# Public Health Regions in New Mexico



# Goals of NM Viral Hepatitis Surveillance:

- Identify outbreaks, new or unusual trends
- Describe the burden of disease
- Educate, PH service delivery, and link to care
  - Accurate, efficient data collection and analysis
  - Dissemination of data to partners
  - Assist/facilitate case follow-up/investigation/management

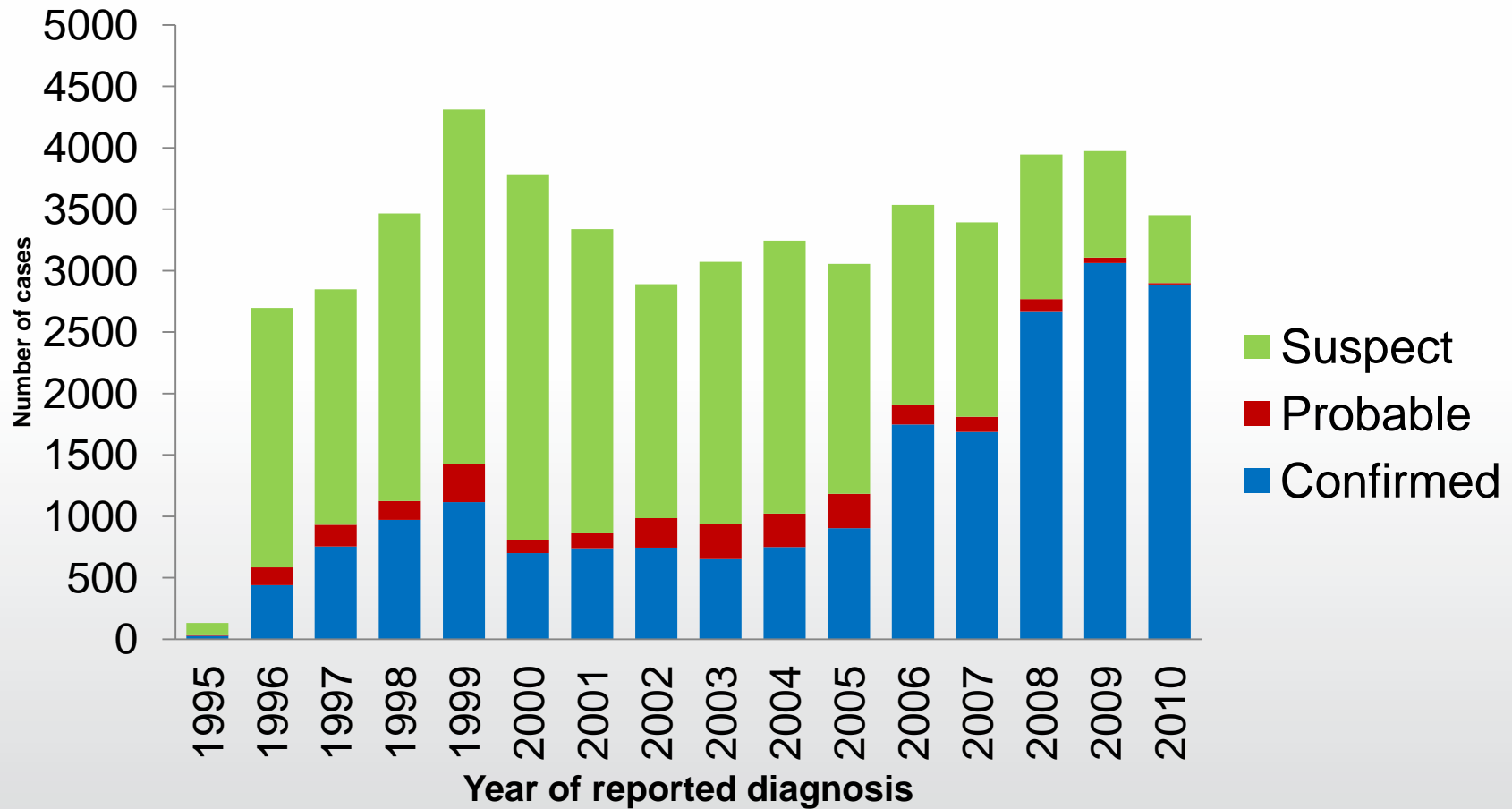
# How surveillance is conducted in NM

- One of a few sites in the country funded to conduct hepatitis surveillance through EIP
- De-duplicated, population-based registry
- Centralized reporting, regional follow-up
- Challenges:
  - Meeting surveillance and case follow-up needs
  - VOLUME/lack of staff

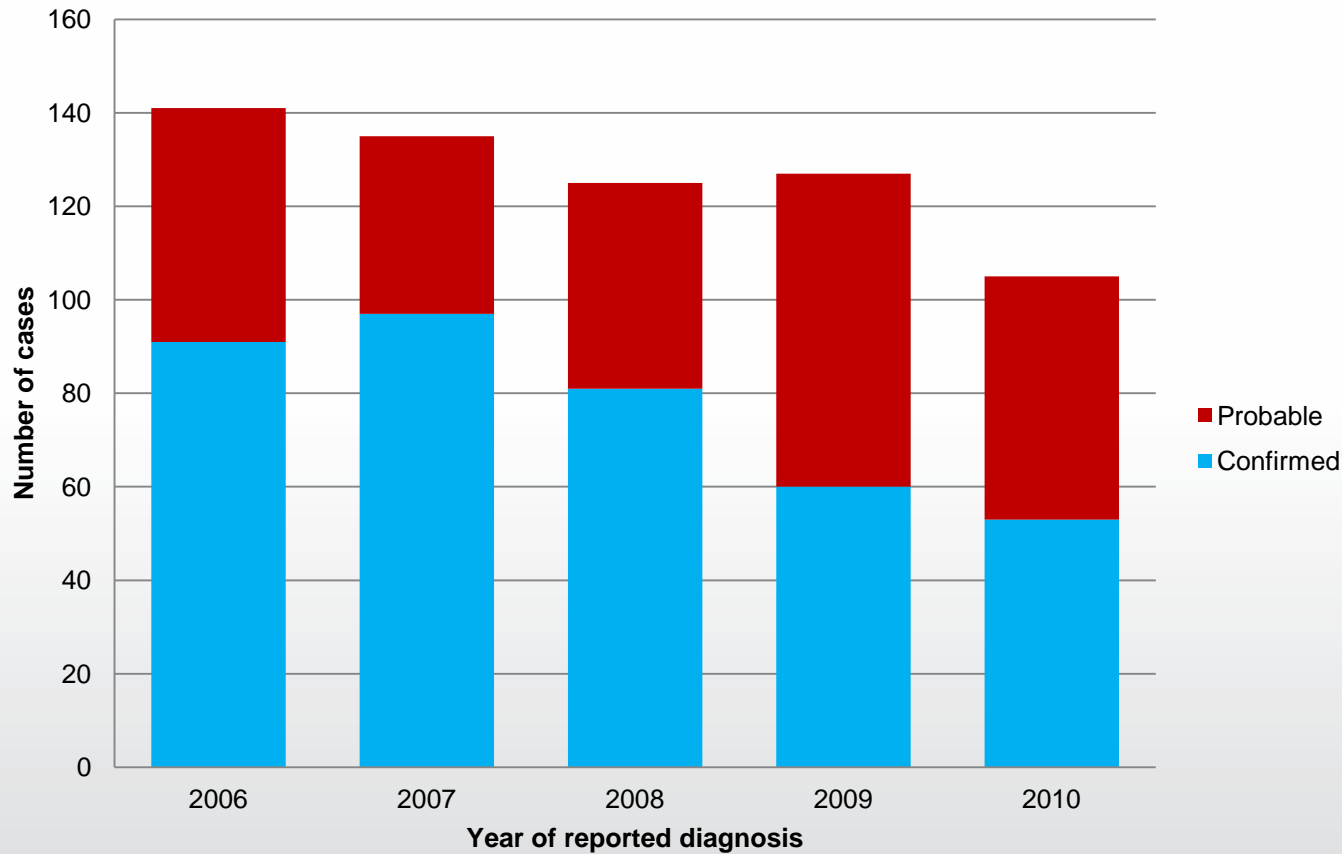
# Client-Centered Surveillance Interviews:

- It's Better to Know
- Liver Health
- Transmission Risks
- Risk Reduction Resources
- Treatment
  - Balancing prevention and surveillance priorities

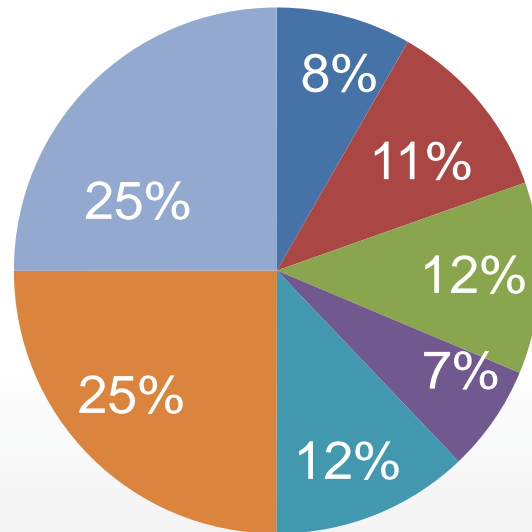
# Hepatitis C Case Counts, NM 1995-2010



# Hepatitis B Case Counts, NM 2006-2010

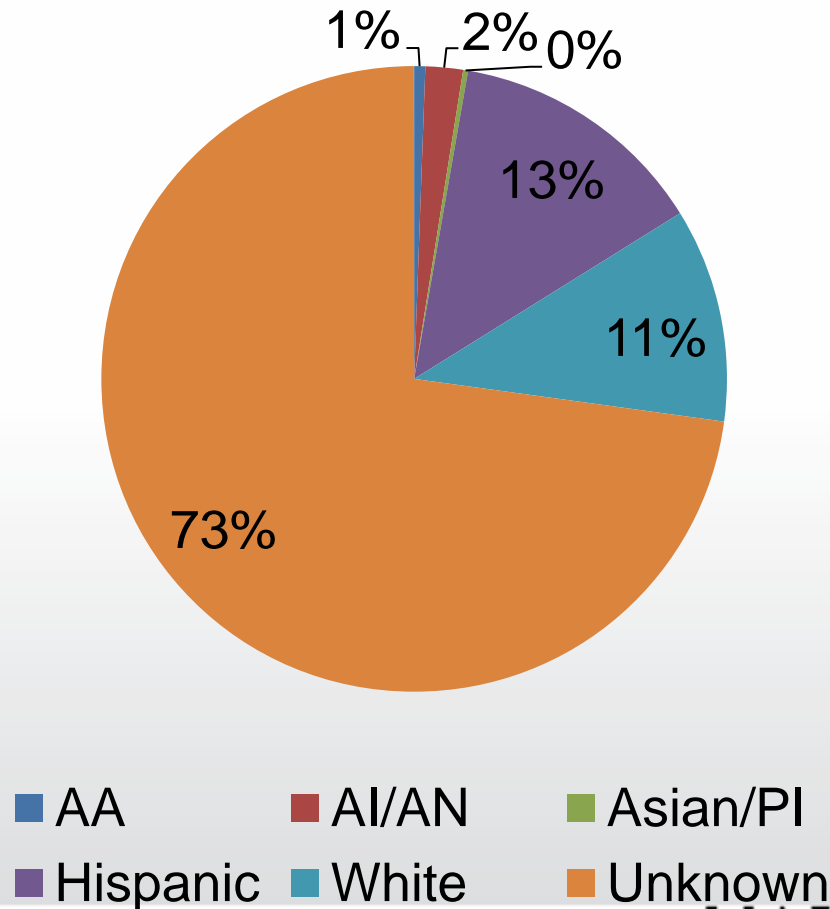


# Reported Cases of Hepatitis C by Region, NM 2010



- 1-Northwest
- 2-Northeast
- 3-Bernalillo County
- 4-Southeast
- 5-Southwest
- Incarcerated (Prison)
- Unknown

# Reported Cases of Hepatitis C by Race/Ethnicity, NM 2006-2010



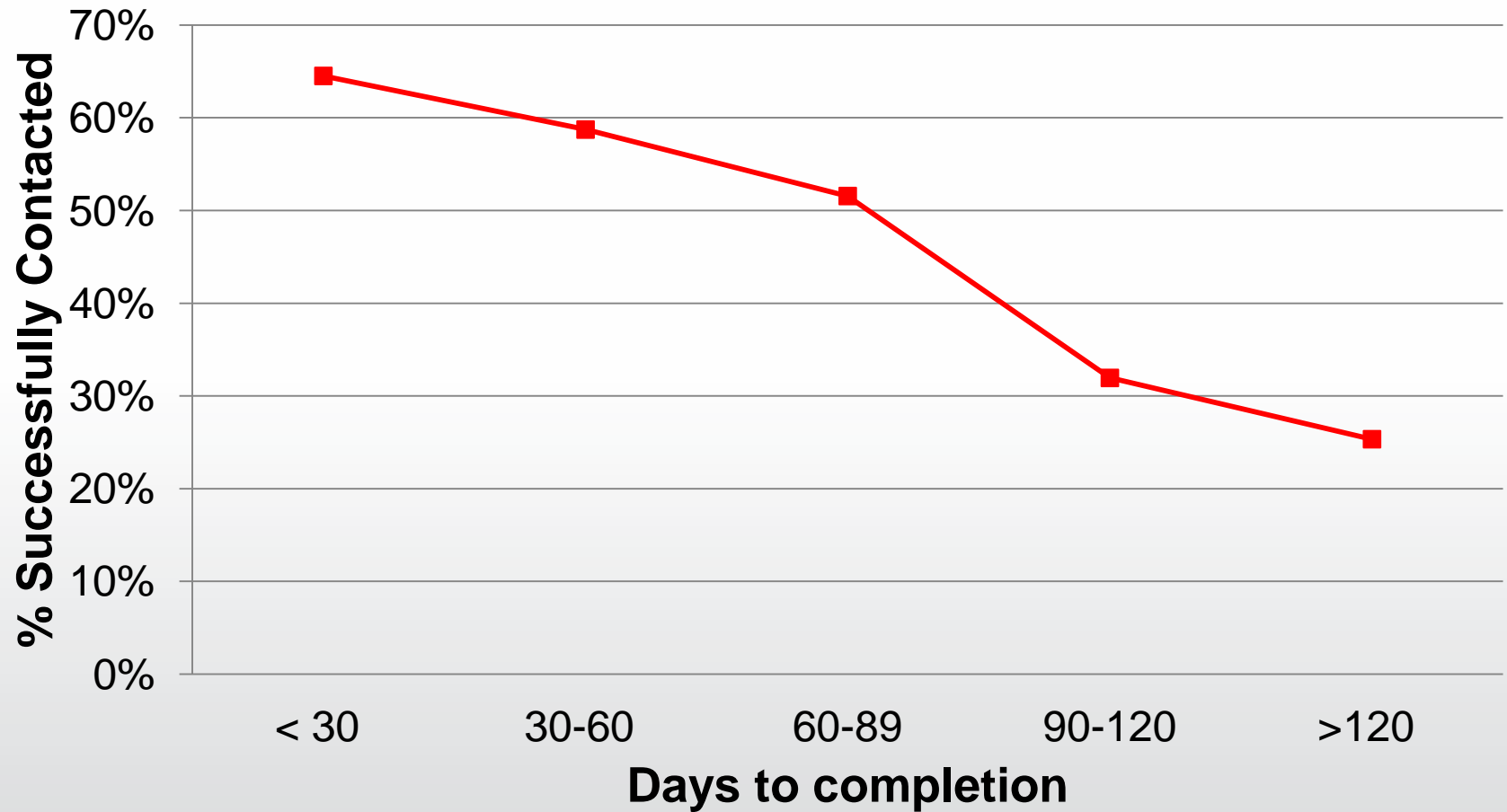
# Investigation Summary

<i>Quarter 1: January-March</i>	<b>Region 4</b>	<b>Regions 1, 2, 4, 5</b>	<b>New Mexico</b>
<b>Total cases entered into NMEDSS<sup>1</sup></b>	96	529	1059
<b>Cases investigated &amp; closed<sup>2</sup></b>	93	265	276
<b>Patients interviewed</b>	50	147	155
<b>% of entered cases investigated &amp; closed</b>	97%	50%	26%
<b>% Interviewed of all cases entered</b>	52%	28%	15%

# Open Cases in NMEDSS, as of May, 2011

Length of time open (from entry into NMEDSS)	# of Open cases
30 Days or less	89
30-59 Days	106
60-89 Days	170
90-119	28
120-179	55
180-269	31
1 year	62

# Timeliness is Key



# Questions